

Summary of Projects Recommended for Access & Habitat Funding

The Access and Habitat (A&H) Board met on April 25, 2023, in Bandon to review projects recommended for funding by A&H Regional Councils (Councils). A project must receive at least four supporting votes from the Board to be recommended for funding through the Oregon Fish and Wildlife Commission. A brief description of the funding requested, access and habitat benefits provided, as well as Council and Board votes follows. The A&H Board recommends funding the following five projects:

2023-04 Bear Creek Access Area

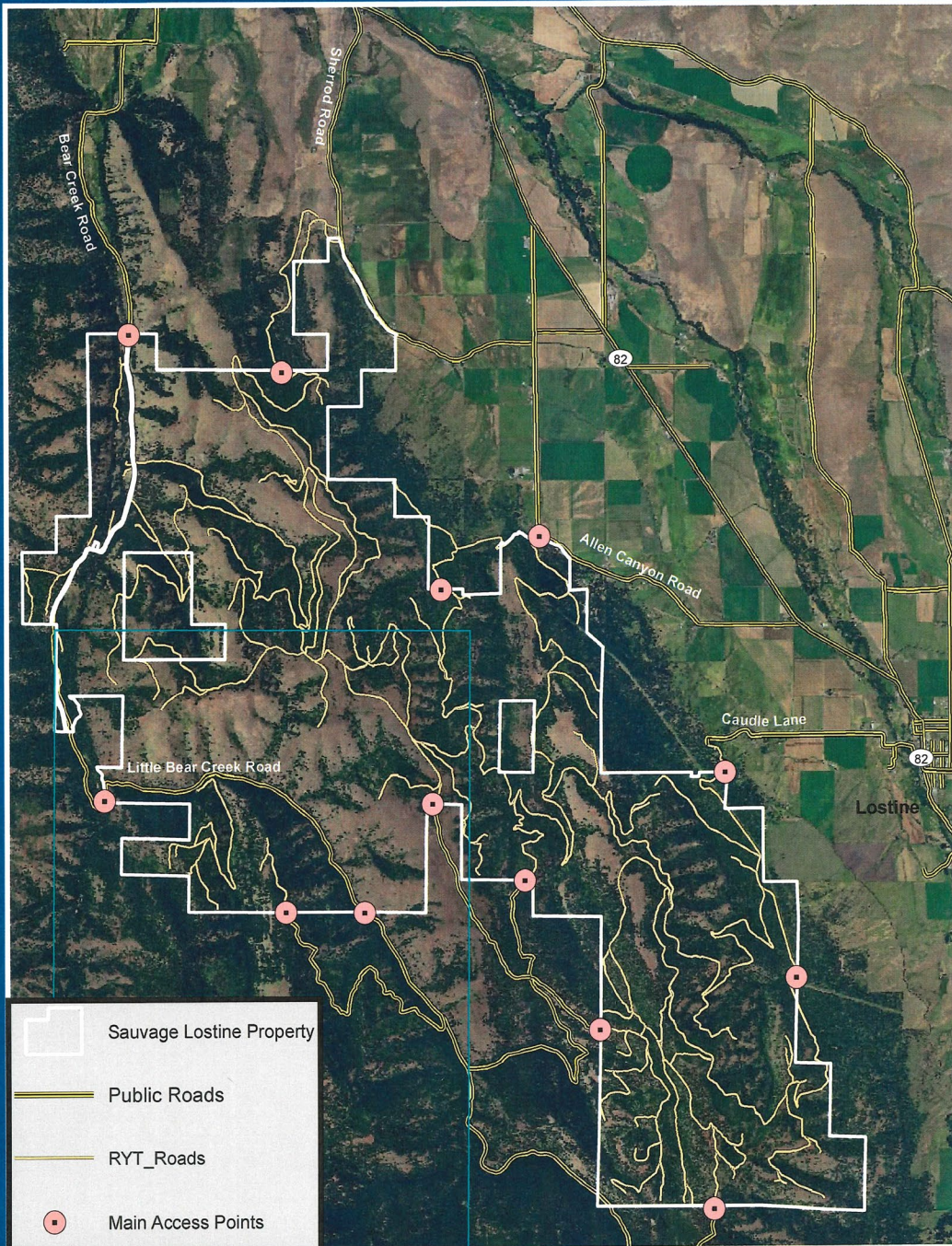
- A&H Funds: \$54,221
- Open Fields Funds: \$48,442
- Total Project Cost: \$108,663
- Applicant: Sauvage Family
- Location: Minam WMU
- Habitat Acres: 10,092 acres
- Access Acres: 10,092 acres
- Project Duration: August 2023-December 2025
- Board Vote: Yes: 7; No: 0

This project provides "Welcome to Hunt" access on 10,092 acres of private land in the Minam WMU for a period of three years to hunt big game and upland game birds. Anticipated hunter use will be high on this property as it provides one of the few early spring entry points into the Minam. Additionally, the project will also enhance important wildlife habitat by treating noxious weeds and improving habitat connectivity through the removal of thirty-two miles of interior fencing.

This property provides over 10,000 contiguous acres of prime winter range and year-round habitat where wildlife use will be encouraged. The project will assist the department in addressing big game distribution issues by providing a place for wildlife to remain, away from agricultural lands.

The project provides \$30,000 in funding for habitat work and \$72,663 for three years of access payments at \$2.40 an acre per year. Open Fields funds will be used to provide the first two years of access payments on the project.

Sauvage Lostine Property - Fire Plan Map



2023-05 Carman Ranch Habitat Improvement and Access Area

- A&H Funds: \$87,150
- Total Project Cost: \$138,400
- Applicant: Cory Carman
- Location: Sled Springs WMU
- Habitat Acres: 960 acres
- Access Acres: 2,628 acres
- Project Duration: July 2023-January 2026
- Board Vote: Yes: 7; No: 0

The project will improve wildlife habitat and livestock grazing operations by treating noxious weeds and increasing yield through staged reseeding on 960 acres. Carman Ranch will utilize a no-till pasture renovation plan to eradicate the extensive weed infestations and use staged reseedings to out-compete weed growth. Fertilizer will be applied to improve soil chemistry in year three or four.

The project area provides important transition areas for migrating deer and elk as they move from wintering areas to the more open grasslands. Each spring deer and elk follow the greenup and move to the ranch in large numbers putting a heavy burden on this privately owned property.

Hunting access will occur on a By Permission basis to 2,628 acres of private land in the Sled Springs Wildlife Management Unit (see brochure on page 4) for a period of three years. All hunter access will be managed through the ODFW Grande Ronde Watershed Wildlife Habitat Biologist and Regional A&H Program Coordinator. Additionally, providing hunter access to Carman Ranch lands will assist ODFW in addressing damage complaints and elk distribution issues.

All funding will be utilized on habitat work on this project. The By Permission access is provided by the ranch without an additional payment for the access.

Carman Ranch Access Area



The Carman Ranch Access Area is a cooperative program between a private landowner and the Oregon Department of Fish and Wildlife Access and Habitat Program to maintain, by permission, public hunting access on private lands. The Carman Ranch Access Area north of Wallowa, OR provides public hunting opportunities for deer, elk, predators, turkey, and quail. All Oregon Department of Fish and Wildlife Regulations and Seasons Apply.

Access Allowed:
April 1 - January 31

Hunting on private lands is a privilege, not a right. Private land hunting opportunities will remain in the future only if the property and rights of private landowners are respected. Abuse it and you will lose it!

Access Permission:

Hunters must obtain permission prior to hunting. Permission can be obtained by contacting the La Grande ODFW field office by phone at (541) 962-1838, between 8 AM and 5 PM Monday - Friday. Reservations will be booked on a first come, first served basis. Hunters who make reservations to hunt during a particular week, are ineligible to hunt the area the following week. Landowners reserve the right to refuse permission and close areas due to normal ranch operations.

Area Regulations:

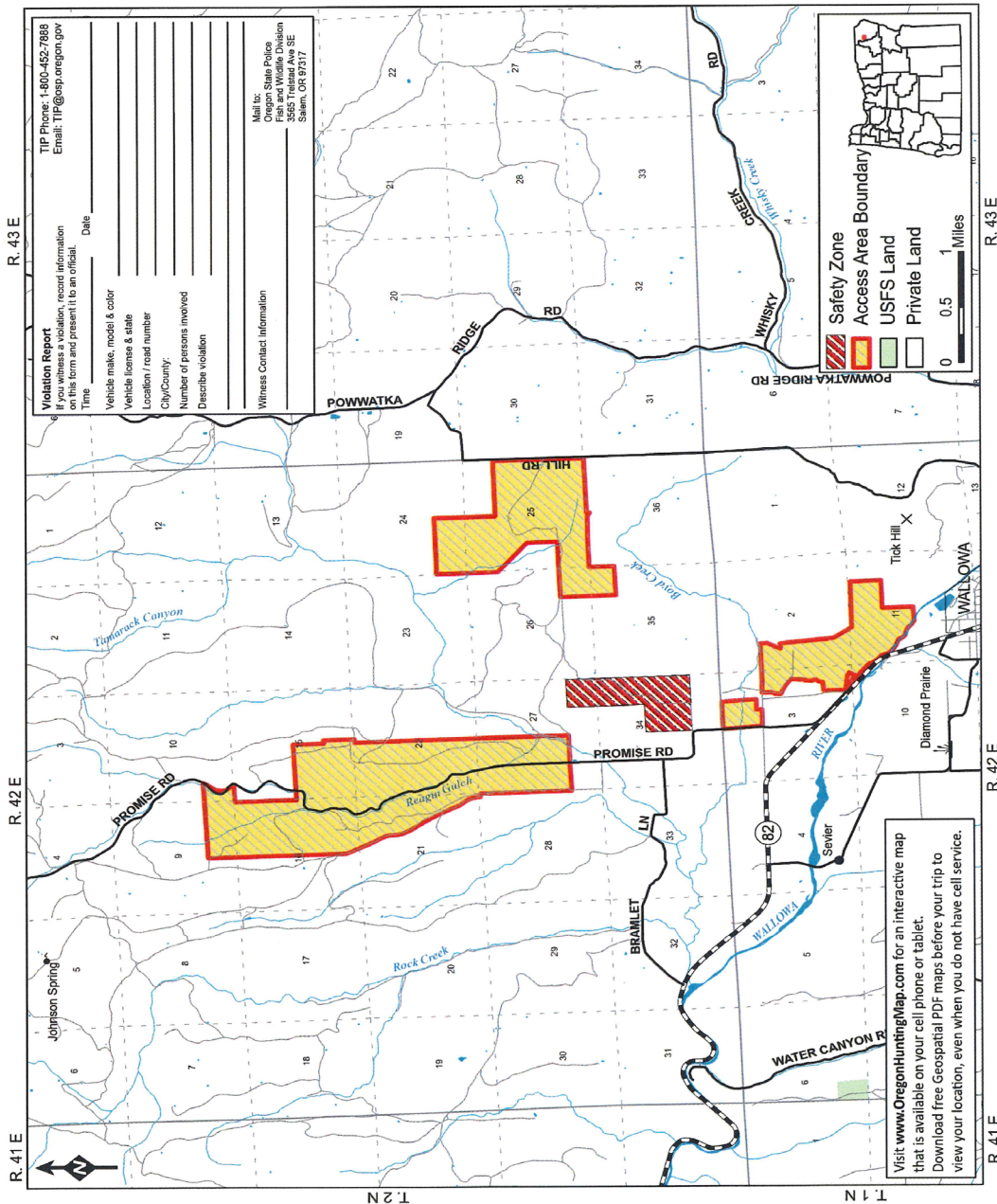
- No Motorized Vehicles
- No camping or night-time use of private land
- No fires, be careful with cigarettes
- No littering, pick up any trash
- Report unlawful activities
- Respect landowners' rights and needs
- Leave all gates as you found them



OSF or 4377 from a mobile phone

*This product is for informational purposes and may not have been prepared for, or be suitable for, legal, engineering, or surveying purposes. Users of this information should refer to consult primary data and information sources to ascertain the validity of the information.

Revised 11/14/2022



2023-06 Harshfield Ranch Habitat Improvement & Access Area

- A&H Funds: \$63,175
- Total Project Cost: \$82,675
- Applicant: Pamela Harshfield
- Location: Sled Springs and Chesnimnus WMUs
- Habitat Acres: 448 acres
- Access Acres: 740 acres
- Project Duration: August 2023-July 2026
- Board Vote: Yes: 7; No: 0

The project is designed primarily to address significant elk damage that is occurring on the ranch. Additionally, the project will enhance wildlife habitat and livestock grazing by treating noxious weeds on 448 acres. Fertilizer will be applied to offset unwanted utilization by elk and maintain sufficient grazing. Hunting access will occur on a By Permission basis to 448 acres in the Sled Springs and 292 acres in the Chesnimnus (see brochure on page 6) for a period of three years. Hunter access will be managed by Pamela Harshfield and monitored by the Regional A&H Program Coordinator. Furthermore, the project will assist ODFW in addressing damage complaints and elk distribution issues by providing hunter access to the elk causing damage.

The statutes that created the Access & Habitat program identify assisting landowners who are experiencing agricultural wildlife damage and utilizing hunters to address wildlife damage as program objectives.

All funding will be utilized on noxious weed treatment and fertilizer to offset elk damage on the ranch. By Permission access is provided by the ranch without an additional payment for the access.

Harshfield Ranch Map (Shown in Black)

Carman Ranch Access Area



The Carman Ranch Access Area is a cooperative program between a private landowner and the Oregon Department of Fish and Wildlife Access and Habitat Program to maintain, by permission, public hunting access on private lands. The Carman Ranch Access Area north of Wallowa, OR provides public hunting opportunities for deer, elk, predators, turkey, and quail. All Oregon Department of Fish and Wildlife Regulations and Seasons Apply.

Access Allowed:
April 1 - January 31

Hunting on private lands is a privilege, not a right. Private land hunting opportunities will remain in the future only if the property and rights of private landowners are respected. Abuse it and you will lose it!

Access Permission:

Hunters must obtain permission prior to hunting. Permission can be obtained by contacting the La Grande ODFW field office by phone at (541) 962-1838, between 8 AM and 5 PM Monday - Friday. Reservations will be booked on a first come, first served basis. Hunters who make reservations to hunt during a particular week, are ineligible to hunt the area the following week. Landowners reserve the right to refuse permission and close areas due to normal ranch operations.

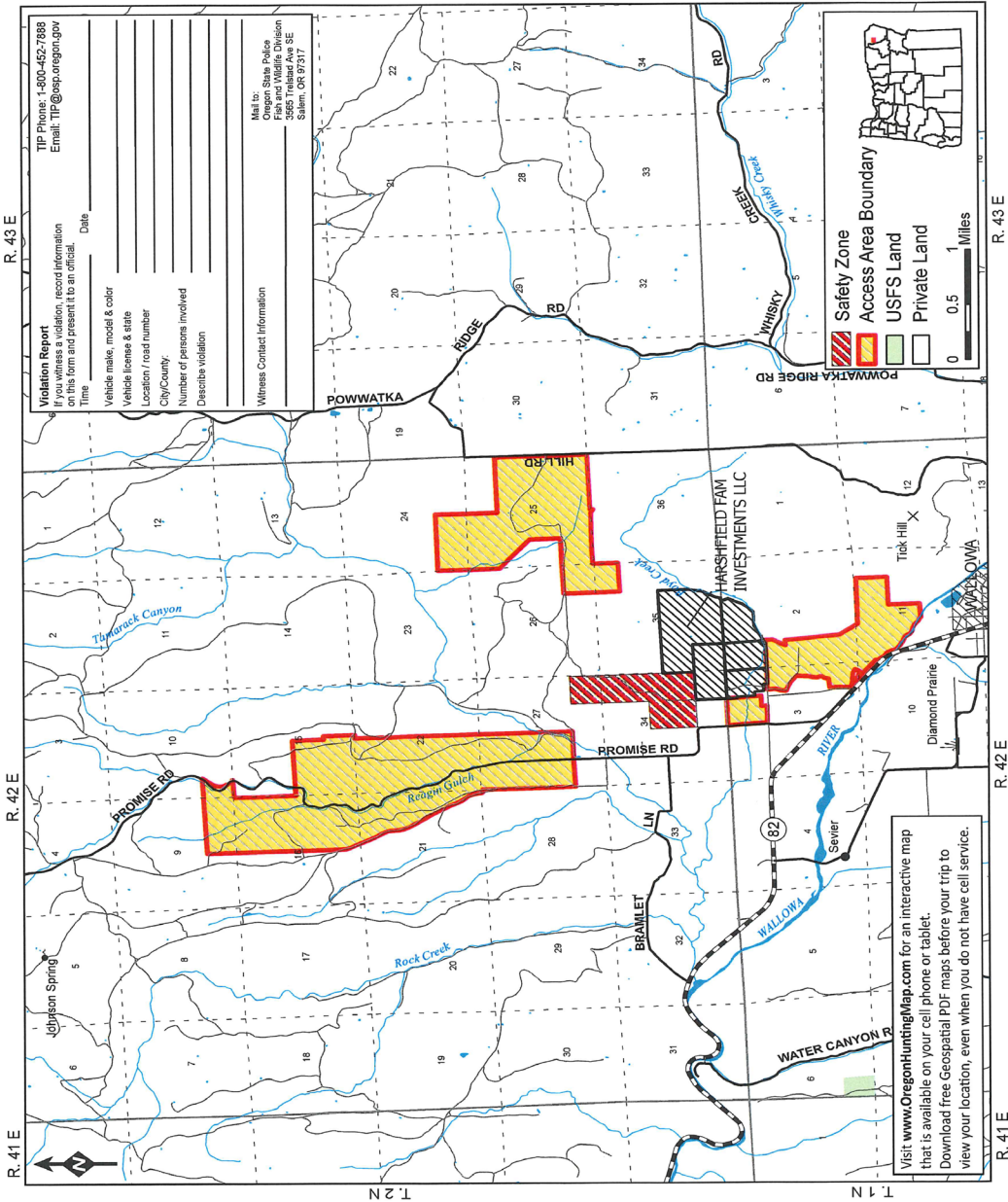
Area Regulations:

- No Motorized Vehicles
- No camping or night-time use of private land
- No fires, be careful with cigarettes
- No littering, pick up any trash
- Report unlawful activities
- Respect landowners' rights and needs
- Leave all gates as you found them



*ODF or *977 from a mobile phone
This product is for informational purposes and may not have been prepared for, or the suitability for, use in a particular area. Users should consult the appropriate regulatory agency for general primary data and information sources to ascertain the usability of the information.

Revised 31/2023



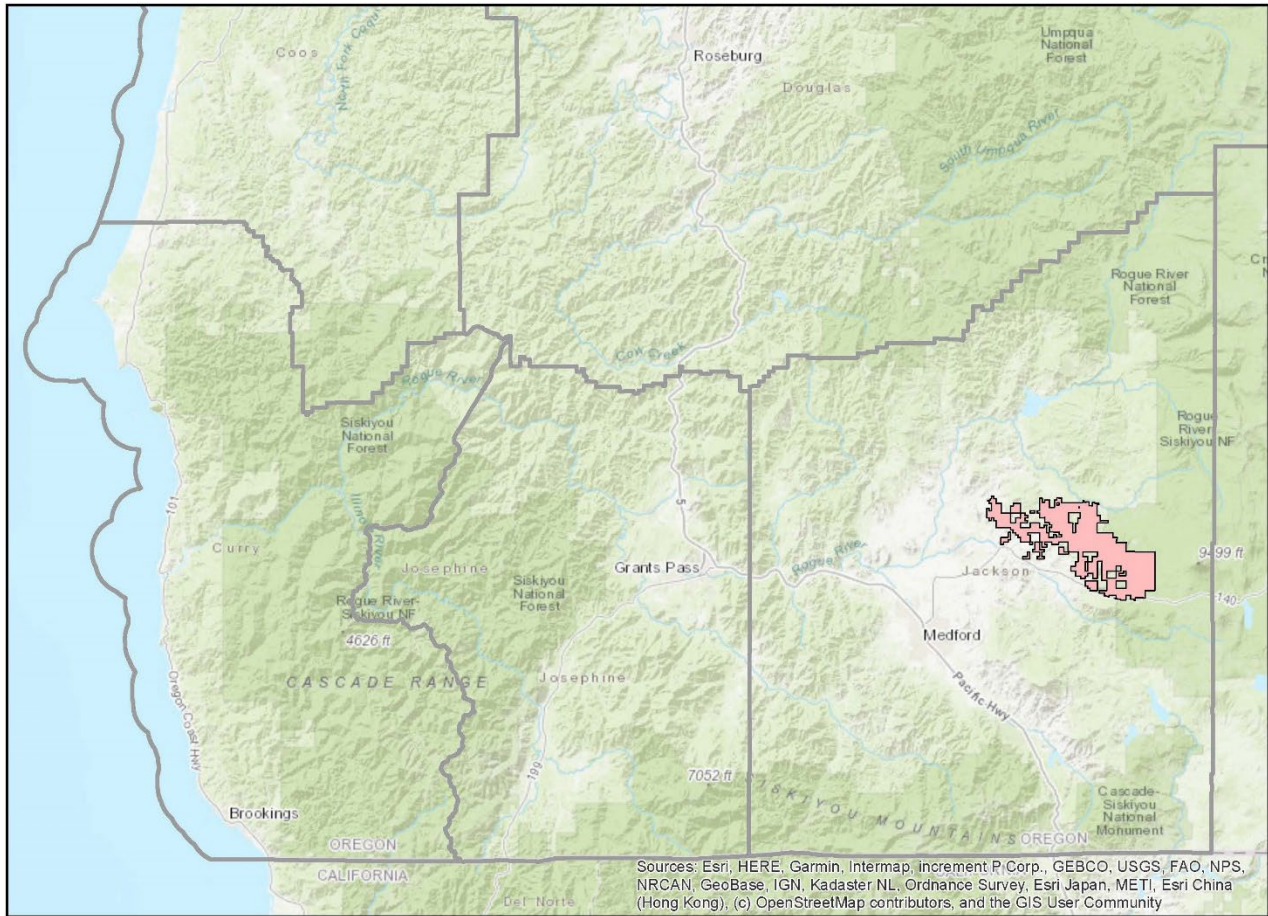
2023-07 Jackson Travel Management Area 2023-25

- A&H Funds: \$63,402
- Total Project Cost: \$110,902
- Applicant: Lone Rock Resources, Manulife Investments Management FM, Silver Butte Timber Company
- Location: Rogue WMU
- Access Acres: 46,014 (17,612 private; 28,402 public)
- Project Duration: August 2023- June 2025
- Board Vote: Yes: 7; No: 0

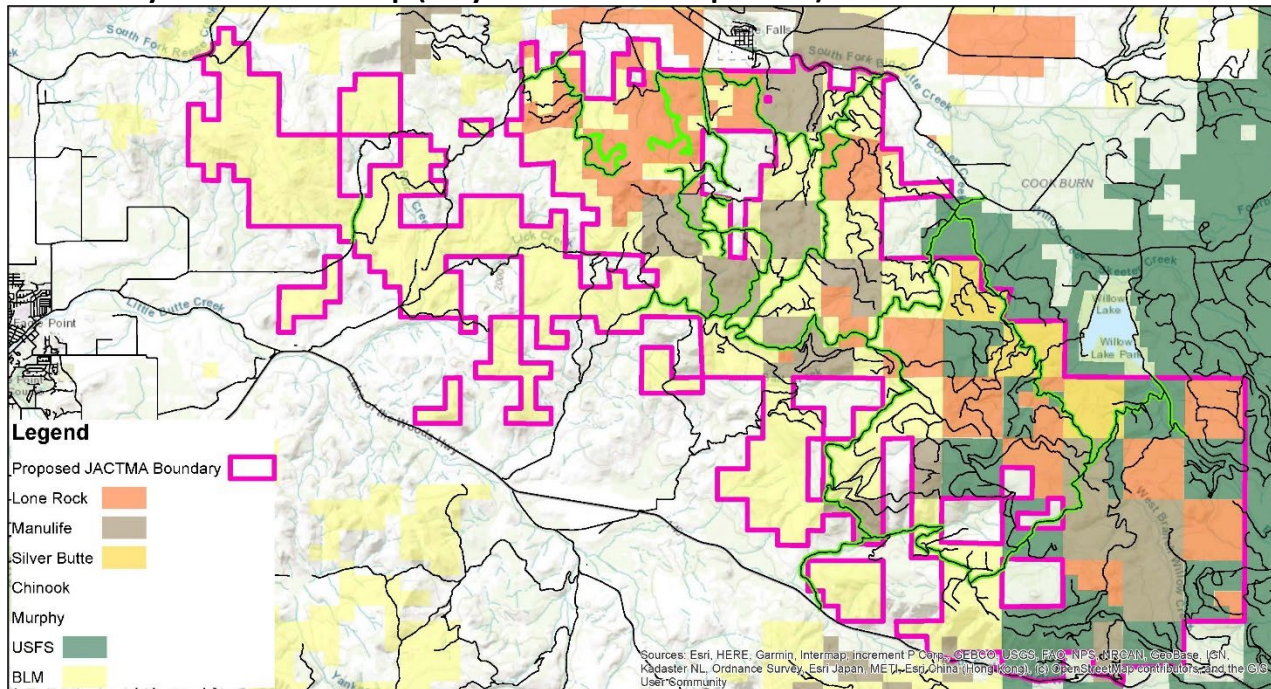
The continuation of the Jackson Access and Cooperative Travel Management Area (see figures on page 8), which began in 1995, will provide hunter access to Lone Rock Timber land, Manulife Investment Properties, and Silver Butte Timber Company land in addition to BLM and USFS lands. The project's road closures will reduce disturbance to deer and elk on important winter range across all landownerships including BLM and USFS. The green dot roads within the project area will remain open to allow access for hunters and recreationists.

This project will pay landowners \$1.80 an acre per year for Welcome to Hunt access for two years through spring of 2025.

Jackson TMA Map



Preliminary Jackson TMA Map (May differ from final product)



2023-08 Vollmer Habitat Improvement & Access Area

- A&H Funds: \$4,830
- Total Project Cost: \$6,701
- Applicant: Mark Vollmer
- Location: Rogue WMU
- Habitat Acres: 11 Acres
- Access Acres: 74 Private (2,314 acres BLM)
- Project Duration: September 2023-June 2025
- Board Vote: Yes: 7; No: 0

The project will thin five acres of oak and create multiple two-acre food plots. The project is within Jackson County's Especially Sensitive deer and elk winter range, adjacent to a BLM special deer and elk management area and is in a priority area for the department's Rogue Wildlife District. The habitat work in oak stands will increase mast crop production and expand green forage availability which together can increase winter deer and elk survival locally. The treatments will also make the oak more resilient to wildfire.

The project also provides "By Permission" access for youth hunters to pursue deer, elk, and turkey using the [Hunt By Reservation](#) digital application system. The project affords high quality hunting for roughly 20 youths for a week each. The project area abuts 2,300 acres of BLM land; while not completely landlocked, travel into the BLM section is very difficult to access from public roads. Access to the Vollmer property will greatly improve access to the BLM for youths to hunt Camel Hump Mountain.

The project provides \$2,950 in funding for habitat improvement and \$1,880 for two years of access payments of \$1.44 per acre for private and \$0.36 per acre for hard to access BLM per year.